

I Am Fortunate

With St. Patrick's Day approaching, I know there is a lot of talk about "luck," but I prefer to think about how fortunate I am rather than how lucky I am. Personally, I think the word luck has less to do with our circumstances than fate. I don't believe that things happen by chance (with luck) but rather by a plan that was set for me long before I was even born.

I feel extremely fortunate that I have two wonderful children. They have blessed my life beyond measure. I don't think I could ever express with words the joy that they bring to me every single day...whether or not they are driving me crazy on a particular day. I absolutely don't know what I would do without them.

I feel fortunate that I have a job that I love to go to every day. The path that got me to this job was nothing less than a miracle. I work with wonderful people for whom I respect and who appreciate my role in advancing the mission of our department.

I feel fortunate to live in a country where I am free. I am saddened when I watch reports on other countries where the people are basically slaves to their government. I sometimes ask myself why God chose to put me in the U.S. rather than another country. There is no answer that returns, but I am grateful that He did. I don't want to waste my freedom. I want to use it for good rather than evil.

I am fortunate to have the friends that I have. Even though I'm not in close contact with some of those friends any longer because we either live apart from each other or our circumstances have changed, they have greatly impacted my life. There are still others that I see on a very regular basis. My life is truly better with them in it. I am fortunate to have friends who hold me accountable, give me sound advice, cry and laugh with me, and keep my deepest secrets.

I am also fortunate that the steps that have been laid out before me have taken me down the path to meet each one of you. You are a total blessing in my life, and I thank each of you for your role in EWI. I don't express to you enough how much I value our relationship. For that, I am sorry, but please know that you do mean so very much to me and to our organization.

I hope that you will take the time this month to think about what makes you feel fortunate. Even when our circumstances are dire, we are still very fortunate. Shine for the whole world to see!



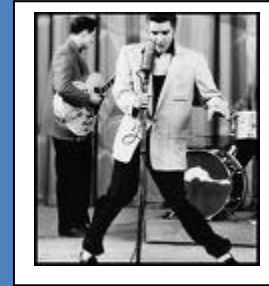
Belinda Shelton

2009-2010 President, EWI of Little Rock
Representing UAMS, Department of Pediatrics



Don't forget about the 2010 EWI Spring Conference in Memphis
April 22-24, 2010

Reservation deadline is March 22, 2010. For more information: www.ewimemphis.org



Fellows

Fellow scholarships are available to EWI members with at least one year of active membership who are admitted to accredited baccalaureate, graduate, or post graduate programs. Fellows dates to remember:

- **April 30:** Applications (Form 43) with all supporting materials **due to the Corporate Office.**
- **May 1 – June 30:** Selection process
- **July 1:** Judging completed and winners announced.

Questions on the Fellows Scholarship program should be addressed to **Fellows Corporate Liaison:** Carol Reniger, EWI of San Fernando Valley at 805.526.1598 or email: basket.maven@usa.net

DATES TO REMEMBER:

EWI Little Rock Chapter Meeting
March 16, 2010
5:30 Social, 6:00 Dinner

EWI Memphis Spring Conference
April 22-24, 2010

EWI Little Rock Chapter 11th Golf Tournament
May 7, 2010, 8:00 a.m., Burns Park

Installation Night
September 14, 2010

63rd LCAM in Kansas City
September 23-25, 2010

2009-2010 Membership Campaign

OBJECTIVE:

- To encourage current EWI member firms to assist in recruitment efforts.
- To offer incentives to EWI "recruiters" (individual representatives and member firms) to partner together to increase EWI's membership.

PROGRAM ELEMENTS:

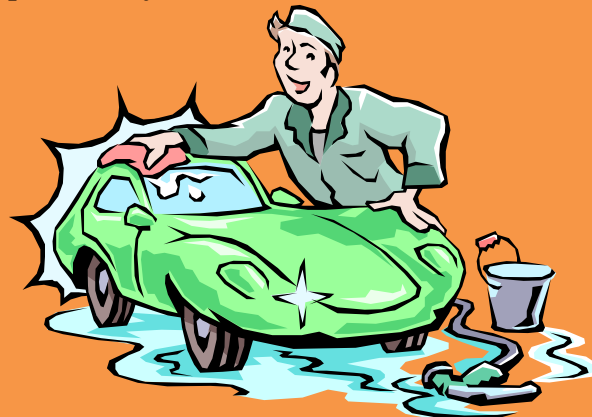
- Start date of October 1, 2009 with the 15 for 12 Campaign. Program ends August 31, 2010.
- A supported public relations effort at the Corporate and Chapter level.
- An incentive program for Chapters, representatives, and member firms.

RECRUITER/MEMBER FIRM INCENTIVES:

- The representative who recruits the most new member firms that join during the recruitment period will win the grand prize - payment of the recruiting representative's Chapter and Corporate annual dues for calendar year 2011, \$100 cash for the representative, feature article and announcement in the September 8, 2010, Corporate EWIconnect, as well as special recognition during LCAM. (In the event of a tie, each of the tying recruiters will receive the award).
- For each new member firm that joins during the recruitment period, the recruiter's name will be entered into a drawing for a chance to win payment of Chapter and Corporate annual dues for her/his firm for calendar year 2011 and \$50 cash for the representative! There are no limits to the number of chances a representative can earn. To be eligible, the recruiter's name must appear on the membership application at the time of submission to the Corporate Office. Winner will be announced in the September 15, 2010, Corporate Connect, and receive special recognition during LCAM.
- During the campaign, the top five recruiters for each month will be featured in the EWIconnect as they share best practices on recruiting new firms.

Ways and Means Raffle Announcement:

Ladies, take that car out in the mud this weekend! Bring on the rain! It just doesn't matter! Our Raffle this month is a gift certificate for a complete car detail!!! One chance for \$5 or three for \$10. Valued at \$193.50!! *Compliments of Best Car Wash*



Annual Business Meeting February 16, 2010



March Birthdays!

- *Melanie Huffman – March 13th*
- *Sherry Jensen – March 16th*
- *Barbara Hoffman – March 19*

FIRM HIGHLIGHT



DALE CARNEGIE TRAINING®

Offered by Howard, Mohorn, and Associates, LLC

#3 Office Park Dr., Suite 104

Little Rock, AR 72211

www.midsouth.dalecarnegie.com

starla.cooley@dalecarnegie.com

501-224-5000

Founded in 1912, Dale Carnegie Training® has evolved from one man's belief in the power of self-improvement to a performance-based training company with offices worldwide. Dale Carnegie Training has had a presence in Little Rock for over 60 years. We are a franchise operation doing business as Dale Carnegie Training of the Mid South. Our territory includes the entire state of Arkansas, western Tennessee, southern Missouri and some counties in Mississippi. We currently have 10 employees working in three sales offices located in Little Rock, AR, Springdale, AR and Memphis, TN.

Since January 2008, this franchise has been owned by Daren Howard and Seth Mohorn. Our mission is to offer businesses in our territory the opportunity to develop their employees, improving their performance to build positive, steady, profitable results. Dale Carnegie Training is recognized internationally as the leader in bringing out the best in people. Our franchise has three out of the top six trainers in the world!

In 2009, the Dale Carnegie Leadership Award was given to the City of Little Rock. The Leadership Award is an international award granted to a company that places special emphasis on the development of its human resources, innovation and organizational creativity for the purposes of achieving its business objectives.

EWI REP:
Starla Cooley





It's getting closer! We need your help with door prizes!

The Golf Committee needs your help. Between now and May 7th, we will be working feverishly to organize our 11th Annual Golf Tournament, not to mention our **largest** fund raiser for scholarship dollars of the year. For this to be a successful event, we need all hands on deck whether you are on the Golf Committee or not.

Currently, our need is for door prizes. As you know, historically, we have been able to give a door prize to each golfer that plays in the tournament (We are talking 100+ door prizes!), so we are asking each of you to provide up to five (5) door prizes! It should also be noted that we are starting from scratch this year! We used every item we had in storage for last year's tournament so we are literally starting over!

Some door prize options would be nice giveaway items that your firm is willing to donate such as coolers, nice travel bags, gift certificates, tickets to sporting events/shows, etc., etc. You are also encouraged to make business contacts in your communities to solicit donation items as well (...maybe you can do some recruiting for EWI in the process!). Forms are available that you can handout to businesses if they would like more information about the golf tournament or if they need a tax receipt form for their donation(s).

If you have items that you are ready to donate, please contact me and we can arrange to collect those items.

On behalf of the Golf Committee, we appreciate all of your support! This is going to be a great year!

Melanie Huffman
Chair, Golf Committee



Let Your Light Shine, Leighsan!

We found out that EWI member, Leighsan Harrod, participates in the ACH reading renaissance program (organized through community outreach by Scott Allen). She reads to Ms. Thacker's 1st grade class every Wednesday at Martin Luther King Elementary.

Way to shine for the whole world to see,
Leighsan!



CONNECTIONS | CAREERS | COMMUNITY

Minutes of the Chapter Business Meeting EWI of Little Rock February 16, 2010

President, Belinda Shelton thanked Representative Peggy Mills, Member Firm Cameron, for donating a \$50 gift card from Copeland's as a raffle item and encouraged the chapter to purchase tickets. The raffle was won by Carol George, Member Firm Datamax. Also the announcement that sign up sheets were present to purchase golf shirts and EWI pins was shared with the chapter.

Invocation was given by Beth Hensley of Region Insurance, Inc.

Dinner was a chili potluck provided by EWI Member Firms. Program Director, Janet Webster announced that all food and paper products were donated by the chapter which meant that no EWI funds were used to furnish the dinner.

Program Report-Program Director Janet Webster: Changes were proposed to the chapter on the Program Report.

March 16th Chapter meeting will have guest speaker Judy McNeil present to speak on Family Law; April 20th Chapter Meeting will be held at Juanita's in the Party Room; May 18th Chapter Meeting, EWISP Awards, will be held at the DoubleTree Hotel, and on June 15th Chapter Meeting, Executive Night, 1st Major General Bill Wofford, Adjutant General of Arkansas National Guard will speak on soldiers reentering the workforce among other topics.

Ways & Means Report-Director Diane Kidwell: Notice was given that from meeting to meeting the raffle funds raised have fluctuated, but overall the goal is that funds are being raised for the chapter. There are still additional books of *When Donkeys Fly* that may be purchased.

Philanthropy Report-President Belinda Shelton: No changes were presented to the chapter.

Treasurer's Report-Treasurer Lynn Harbert:

Operational Quarterly Financial Report (ending 12/31/2009):

Total reserve in all accounts : \$48,790.01

Net proceeds : \$5,669.87 (Includes \$6,340 of 2010 income. Actual Net Proceeds for 2008 is - \$670.13)

Amount of total receipts: \$30,112.48

Total Reconciled En Reserve: \$54,460.78

This reflects an 11% increase from last year

B/C/DP Quarterly Financial Report (ending 12/31/2009):

Balance beginning of year: \$47,449.66

Total disbursements: \$19,816.12

Net Proceeds: \$8,300.04 (\$-8,518.83 Net Proceeds per Register plus \$218.79 CD interest totals \$-8,300.04)

Total reconciled Cash: \$39,149.62

This reflects a 17.5% decline from January 1

(Continued on next page...)

Little Rock Chapter Board of Directors

President

Belinda Shelton
UAMS, Department of Pediatrics
sheltonbelindac@uams.edu

Vice President/President-Elect

Leighsan Harrod
Arkansas Children's Hospital
harrodll@archildrens.org

Secretary

Peggy Maxell
Chesapeake Energy Corporation
Peggy.maxell@chk.com

Treasurer

Lynn Harbert
Delta Dental of Arkansas, Inc.
lharbert@ddpar.com

Membership Director

Beth Hensley
Regions Insurance, Inc.
Beth.hensley@regionsinsurance.com

Publications Director

Melissa Godfrey
UAMS, Department of Pediatrics
godfreymelissad@uams.edu

Sergeant at Arms Director

Carol Massery
St. Vincent Health System
cmassery@stvincenthealth.com

Program Director

Janet Webster
Arkansas Children's Hospital
websterjm@archildrens.org

Ways and Means Director

Diane Kidwell
Heart of Arkansas United Way
dkidwell@heartaruw.org

The chapter was informed that we will need to exceed our \$12,000 fundraising or it will be depleted and will affect EWISP, ASIST, and the Reading Rally.

Membership Report-Director Beth Hensley: Firms MODA, Melissa Alley, and Little Rock Women, Kyra Bragg, were posted with no objections from the chapter. Melissa and Kyra were unable to attend the meeting and be introduced to the member firms. The Corporate Membership Process as handed out to the chapter for review. The chapter was informed on the recruiter/member firm incentives and reminders that PowerPoint Slide information from each member firm needs to be given to Beth Hensley no later than March 1st and there will be no sound available on the presentation.

Golf Committee Report-Melanie Huffman, DoubleTree Hotel: Entry forms and sponsorship information handout were given to the chapter. Currently, five teams have signed up. Golf Towels will be given away to participants instead of goody bags. The chapter was encouraged to donate five door prizes for the tournament. On March 6th, the chapter was invited to have breakfast at 9 a.m. at Mimi's Café in West Little Rock then the group will plan to recruit company golf teams and door prizes. Bale Chevrolet has donated the hole in one prize, a Chevy Camero. The day of the tournament member firms were asked to volunteer to make the event a success.

ASIST Committee Report-Nancy Dutton, McKay and Company: 2010 processes have begun and letters have been sent to schools. A list that was compiled from students wishing to apply for the scholarship last year was also sent a letter this year. Applications must be returned by April 30, 2010. Judging will take place in May and June. Depending on availability of qualified applicants up to four \$1,000 may be awarded and will be announced in the July Chapter Meeting. The highest scoring applicant will be submitted to the corporate ASIST Scholarship Program by July 1st to compete for an additional \$2,500 corporate scholarship.

EWISP Committee Report-Linda McNutt, Ryerson: Information packets have been mailed to all high schools in Pulaski, Lonoke and Saline Counties. The applications will be made available through high school counselors. The deadline to receive applications is March 15, 2010. Judges are Tamara Tidwell, former Director of Financial Aid at UAMS and is now retired, Cathryn Hinshaw, Political Science Professor at UALR and former Executive Director of Arkansas Fire and Police Pension Review Board, and Pat Carney who is the Director of Operations at Ryerson. The first place recipient will receive a \$3,000 scholarship and second place will receive \$2,000 .

2009-2010 Strategic Plan Proposal-Linda McNutt, Ryerson: Committee Members Leighsan Harrod, Diane Kidwell, and Deb Mathis were announced. The 2007-2009 Strategic Plan deletions were read to the chapter and the new additions to the 2009-2010 Strategic Plan were reviewed. Linda McNutt made a motion to ratify the changes to the 2009-2010 Strategic Plan and seconded by Nancy Dutton and was unanimously approved as submitted.

ANNOUNCEMENTS:

EWI Spring Conference-April 22-24, Memphis Tennessee

EWI Fellows Scholarship-Review corporate website for more information

Board Meeting-February 23, Arkansas Children's Hospital-Sturgis Building/Room 4171-5:30 p.m.

Chapter meeting-March 16th, Vieux Carre- Meet & Greet 5:30 p.m., Meeting begins at 6:00 p.m.

Board Minutes, February 23, 2010

Treasurer, Lynn Harbert: Reports attached.

January 2010/Operating Account

Checks have been written totaling \$1,352.62
Ending General Account Balance \$40,462.96
Investment Account (CD) \$21,491.77

January 2010/B/C/DP Account

No checks were written for this month.
Ending Checking Account Balance \$13,891.80
Investment Account (CD) \$26,864.71
Restricted Funds \$8,213.39

Checks over six months that have not cleared the bank were discussed. There are three checks outstanding totaling \$1,193.75. EWI is subject to the state Abandoned Property regulations (Ark. Code Ann. 18-28-201, et. seq.) which require any unclaimed property to be sent to the state after 5 years. Lynn will work on resolving the outstanding check issue.

2008/2009 Financial Comparison reports were distributed and discussed.

Upon a motion made by Lynn Harbert and seconded by Leighsan Harrod, the January 2010 Operating and B/C/DP expenditures were approved as submitted.

Melissa Godfrey reported on golf towels for the Golf Tournament. Since goody bags will not be handed out this year, the thought was to put EWI golf towels in each golf cart for the golfers. The quote included everything for \$418.15. After discussion of the golf towels, Melissa Godfrey made a motion to approve the expense of \$418.15. The motion was seconded by Diane Kidwell. Motion passed.

Melissa Godfrey reported on social media and the need for the chapter to participate to get the word out. After discussion, it was recognized the chapter needs to move in this direction, however, we will wait for Corporate to issue guidelines for social media. Melissa Godfrey will work with Corporate.

President Belinda Shelton pointed out in everyone's Board meeting material there was a listing for Corporate Dates and Deadlines calendar for reports.

Program Director, Janet Webster: There was one change made to the April 20th meeting program speaker. The speaker will be Starla Cooley with Howard, Mohorn & Associates. Starla is a member of EWI who will speak on "Positive Thinking."

Ways and Means Director, Diane Kidwell: Diane Kidwell is working on a car detail raffle for the next meeting. Discussed and agreed that a nice package should be put together for the Executive Night raffle. Members would buy the raffle tickets for their Executive for a chance to win. Diane reported T-shirts for Reading Rally have been billed to corporate, but no response to date. She will follow up with Heather via email.

Sergeant-At-Arms, Belinda Shelton on behalf of Carol Massery: In Carol's absence, President Belinda Shelton presented the Sergeant-At-Arms report expressing pleasure on the continued success we are having with the chapter meetings. Janet reported we are averaging 30 members per meeting.

Membership Director, Beth Hensley: There were no objections regarding the posting of Melissa Alley and Kyra Bragg. Beth Hensley has tried to contact them with no success. She will follow up with a phone call and email. Beth asked if it was time to contact Kimberly Sims. President Belinda Shelton responded yes, so Beth will follow up. Beth requested time at the next meeting to challenge the members to bring a name for posting. Beth will introduce Sherry at the next chapter meeting. Beth reported she has begun to receive PowerPoint presentations for Executive Night.